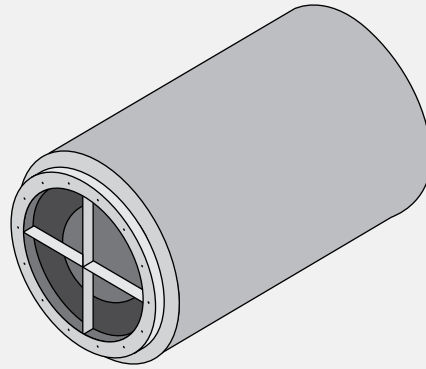


SILENCER SHEETS INDUSTRIAL NOISE CONTROL

VIBRO-ACOUSTICS®
A Swegon Group company

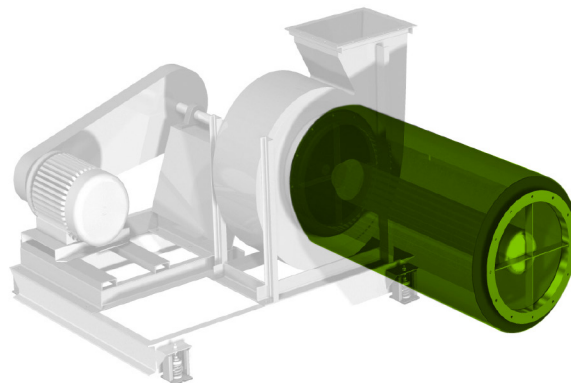
CD-I

Circular Dissipative
Centrifugal Fan
Inlet Silencer



Description

THE VIBRO-ACOUSTICS CD-I silencer is fitted with a continuous flange and an aerodynamically designed centerbody. This results in very low generated noise levels, while providing optimal attenuation. The centerbody's smooth inlet and static regain discharge design will minimize the adverse aero-acoustic system effects associated with fan, silencer, and duct fitting interactions.



Standard Features

- > HRS casing with external prime painting and continuously welded seams
- > External gauges compatible with fan construction
- > Inlet and outlet flanges with customer specified hole pattern
- > 16 ga. galvanized perforated internal liner
- > Centerbody designed to reduce fan system effects
- > Internal stiffeners

- > Acoustic grade fibrous media fill under minimum 15%
- > Compression with fiberglass cloth protection
- > 1 in. x 1 in. x 16 ga. galvanized birdscreen protection

Accessories

- > Rain hoods
- > Inlet filter housings
- > Duct transitions or spool pieces
- > Bolt and gasket kits
- > Flow measurement probes

Options

- > Special painting systems
- > Corrosive resistant coatings
- > Support legs
- > Access panel
- > Drainage connection
- > Removable birdscreen
- > All galvanized or stainless steel construction materials
- > Custom designs and configurations for special space and performance requirements