

## PS2

### Acoustic Panels IFBC Panel

#### Performance

- > Performance based on a 4" thick panel with 18ga outer sheet and 22ga inner liner filled with Acoustic grade media

#### Advantages

- > Easy to assemble at job site
- > Individual panels can be disassembled easily without dismantling the whole assembly
- > Pressure rating up to 10" W.G.
- > Well suited for large plenums walls due to inherent strength

#### Applications

- > Enclosures for noisy equipment
- > Acoustically sensitive rooms and booths
- > Air handling unit casings and plenums
- > Sound testing facilities
- > Acoustic Barriers for noise by law compliance

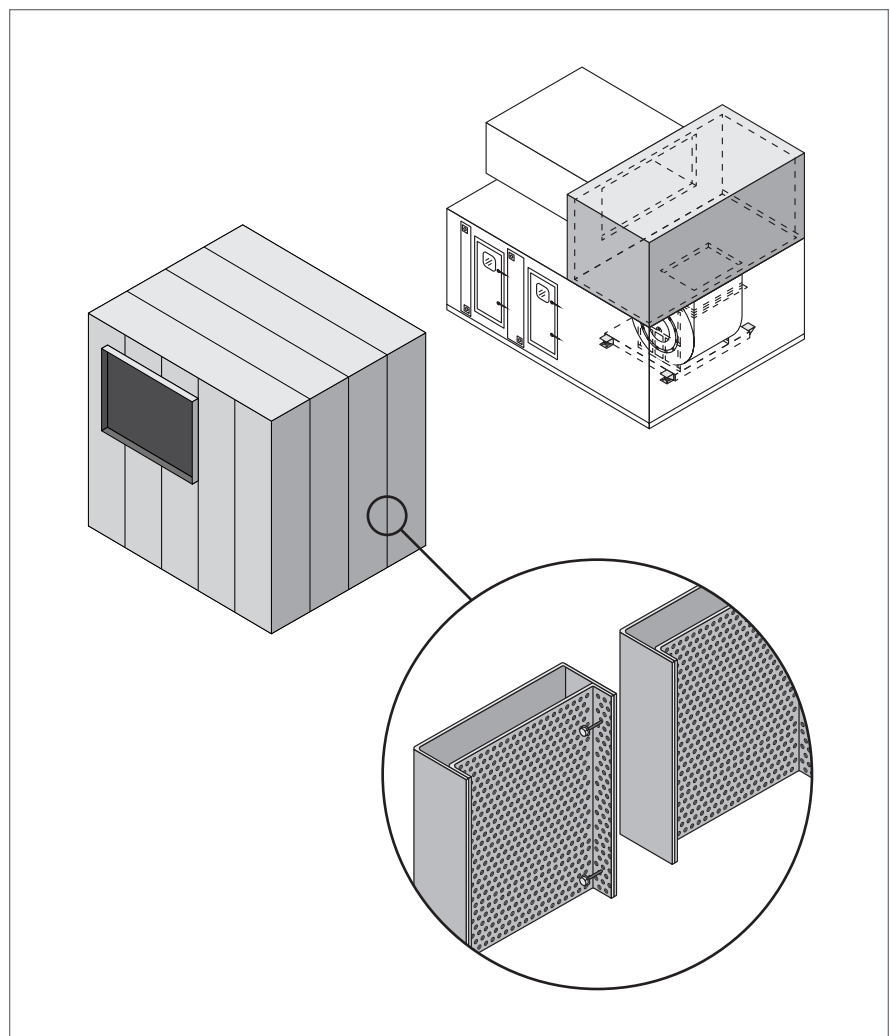
#### Construction

- > Roll formed inner and outer skin
- > Maximum 16ga galvanized or stainless steel
- > Thermal/Acoustical media sandwiched between skins
- > Internal stiffening of panel
- > Stiffeners installed internally to provide strength

#### Options

- > Various panel sizes and thickness
- > Panels can be built to required sizes
- > Panel can be built with required materials like Galvanized, stainless, Galvanneal, pre-painted or Aluminum
- > Doors, windows, access panels and openings can be provided as required
- > Thermal break
- > Lining for acoustic media (Tedlar, Mylar and Fiberglass cloth)

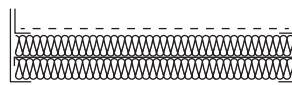
Octave Band	125	250	500	1000	2000	4000
Transmission Loss	21	28	39	52	53	56
Absorption	0.7	0.9	0.99	0.99	0.9	0.8



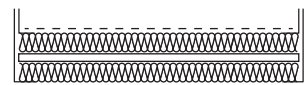
**Solid / Perforated**



**Solid / Solid**



**Septum**



**Added Mass Core**